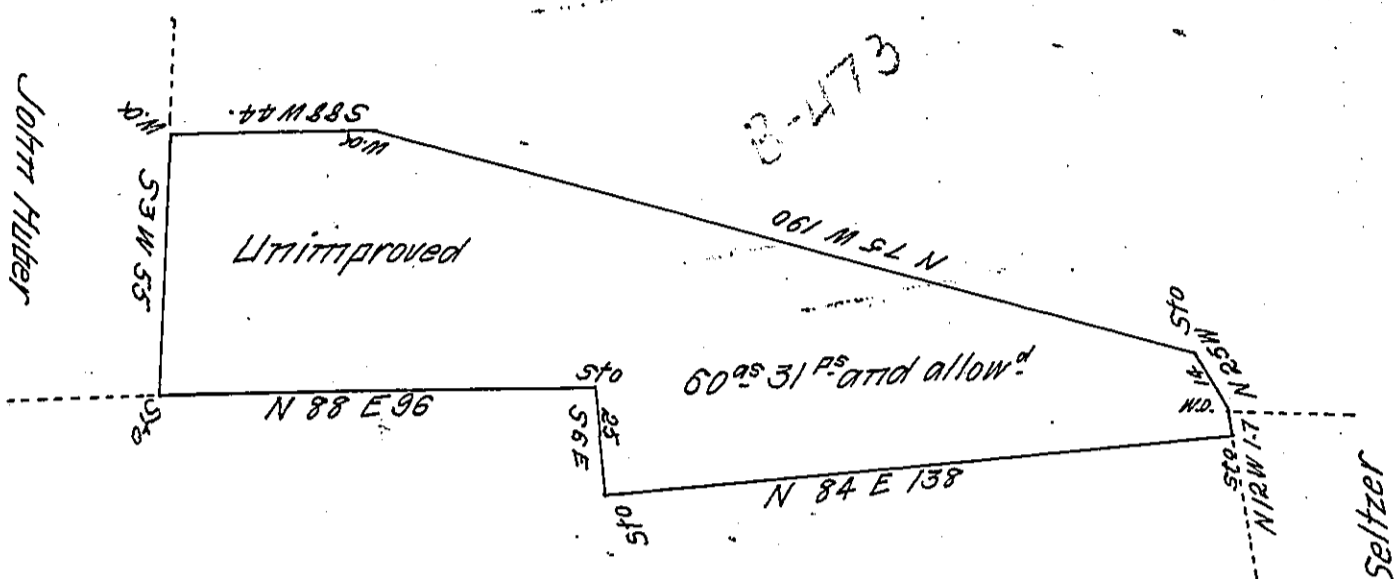


Land owned by the Commissioners of Schuylkill County



Joseph Keffer's improvement

Michael Seltzer

Situate in Lower Maltanotongo township Schuylkill county containing Sixty Acres and thirty one perches, and the allowance of Six per Cent. Surveyed on the 20<sup>th</sup> day of July 1826, in Pursuance of a Warrant dated the 17<sup>th</sup> day February 1826 granted Francis Spaetzer

To Gabriel Hiester Esquire  
Surveyor General of Penn<sup>a</sup>

F. Lauderbrunn Dep. Sur.  
Schuylkill Co<sup>y</sup>

IN TESTIMONY that the above is a copy of the original remaining on file in the Department of Internal Affairs of Pennsylvania, made conformably to an Act of Assembly approved the 16th day of February, 1833, I have hereunto set my Hand and caused the Seal of said Department to be affixed at Harrisburg, this Sixteenth day of June 1911

*Henry Horch*  
Secretary of Internal Affairs.